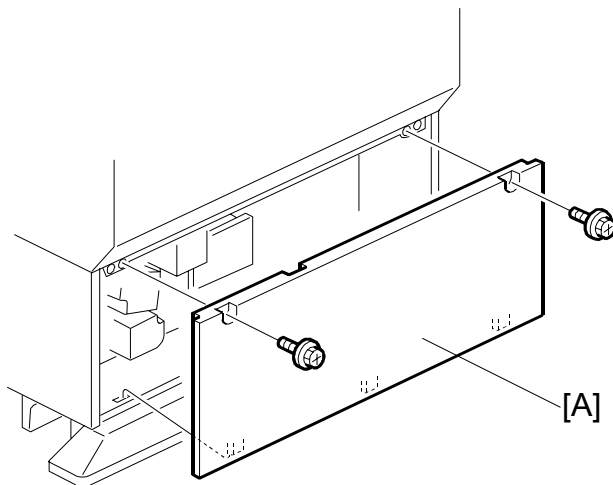


TWO-TRAY PAPER FEED UNIT

(Machine Code: B598)

1. REPLACEMENT AND ADJUSTMENT

1.1 COVER REPLACEMENT

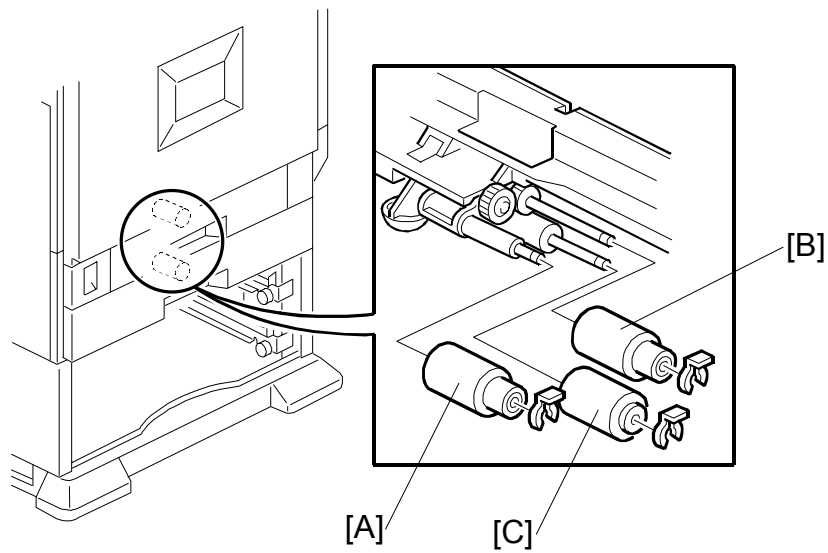


B598R102.WMF

1. Rear cover [A] (⌀ x 2)

1.2 ROLLER REPLACEMENT

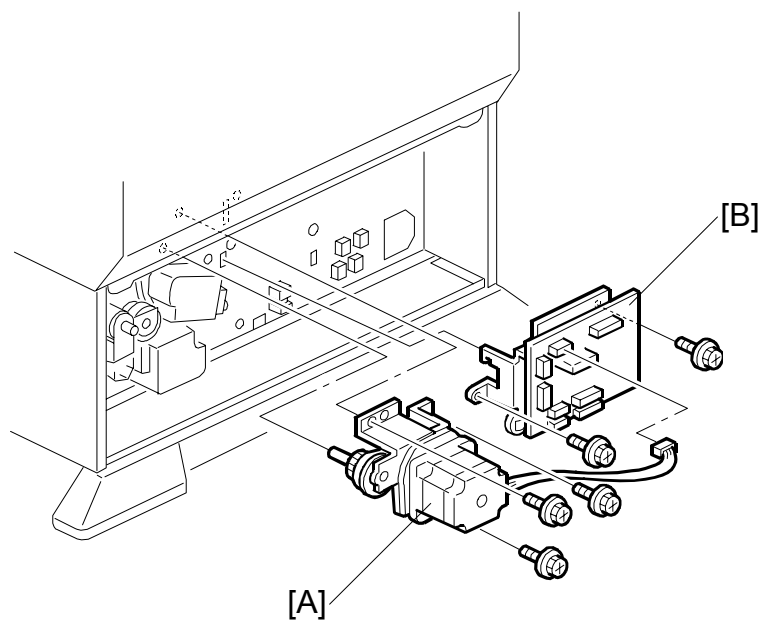
1.2.1 PAPER FEED, SEPARATION, AND PICK-UP ROLLERS



B598R101.WMF

1. Paper tray
2. Pick-up roller [A] (1 hook)
3. Paper Feed Roller [B] (☞ x 1)
4. Separation Roller [C] (☞ x 1)

1.3 PAPER FEED MOTOR AND MAIN BOARD

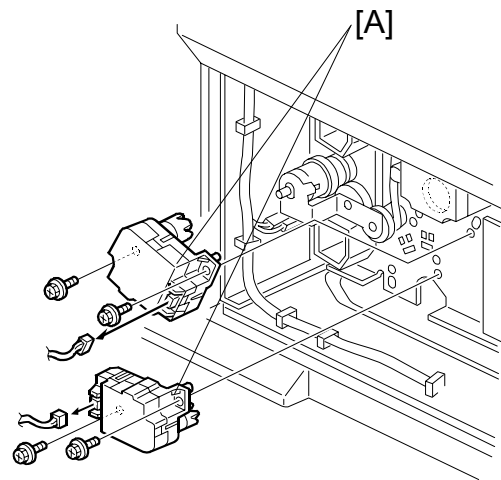


B598R103.WMF

1. Rear cover (🔩 1.1)
2. Paper feed motor [A] (🔩 x 1, 🛡️ x 3)
3. Main board [B] (🔩 x 2)

1.4 TRAY LIFT MOTORS

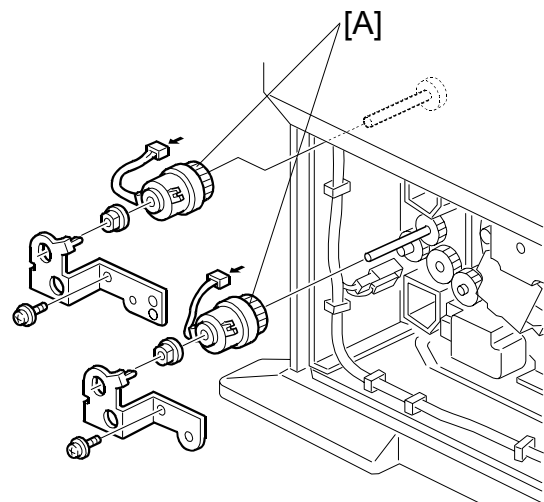
1. Rear cover (🔩 1.1)
2. Tray lift motor [A] (🔌 x 1, ⚙️ x 2)



B598R104.WMF

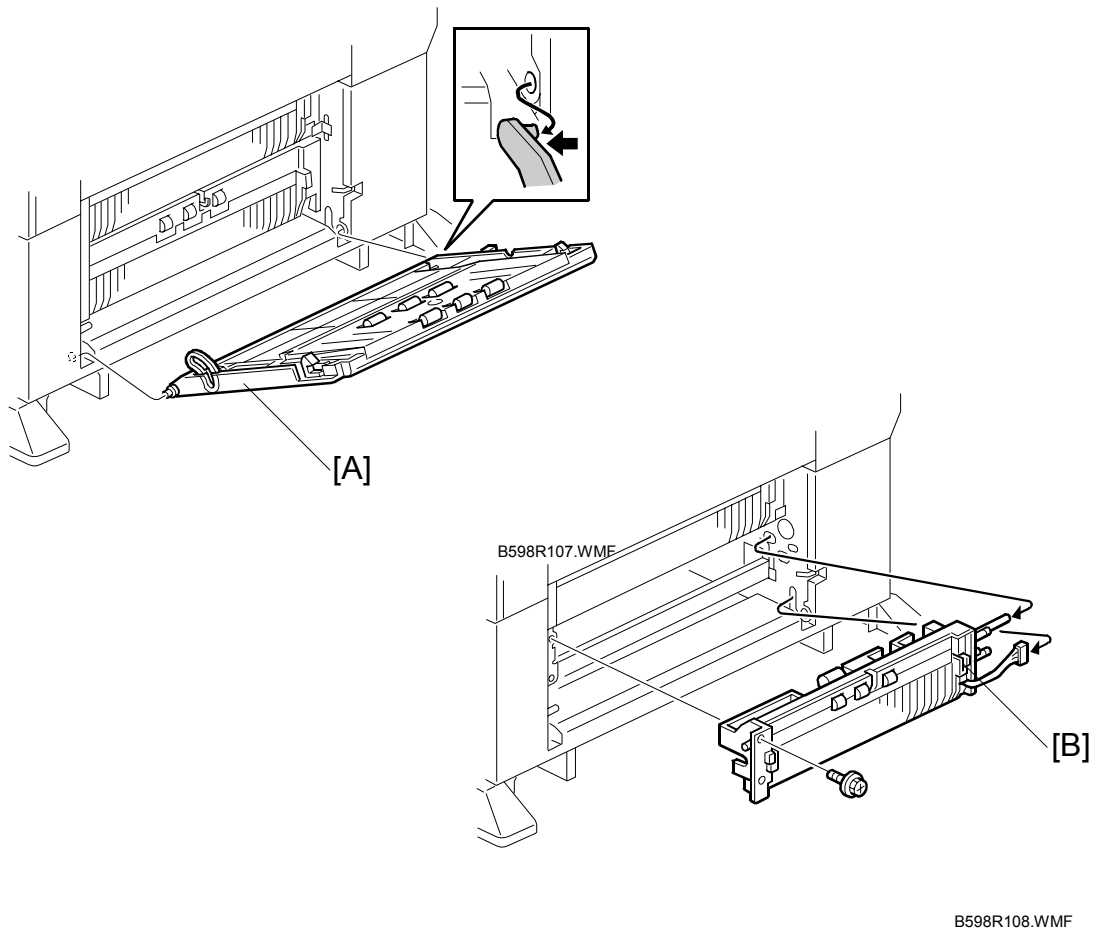
1.5 PAPER FEED CLUTCHES

1. Rear cover (🔩 1.1)
2. Paper feed clutches [A] (🔌 x 1, 1 bracket, 1 bushing)



B598R105.WMF

1.6 PAPER FEED UNIT REPLACEMENT

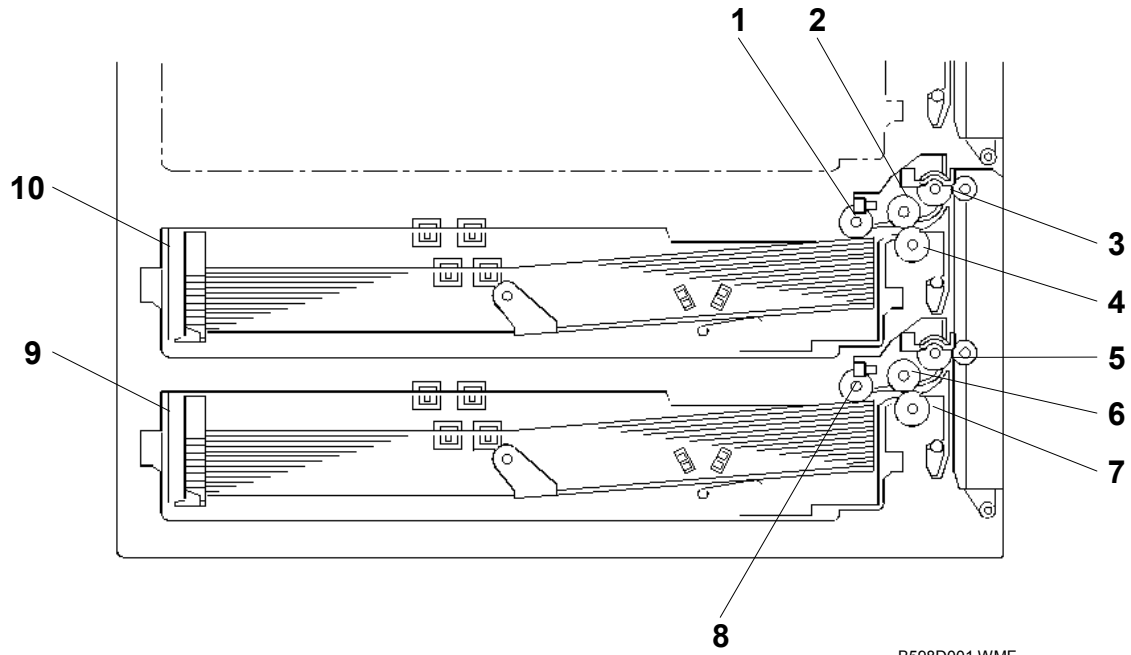


1. Vertical transport cover [A] (1 hook)
2. Paper feed unit [B] (⚙ x 2, 📄 x 1)

2. DETAILED DESCRIPTIONS

2.1 OVERVIEW

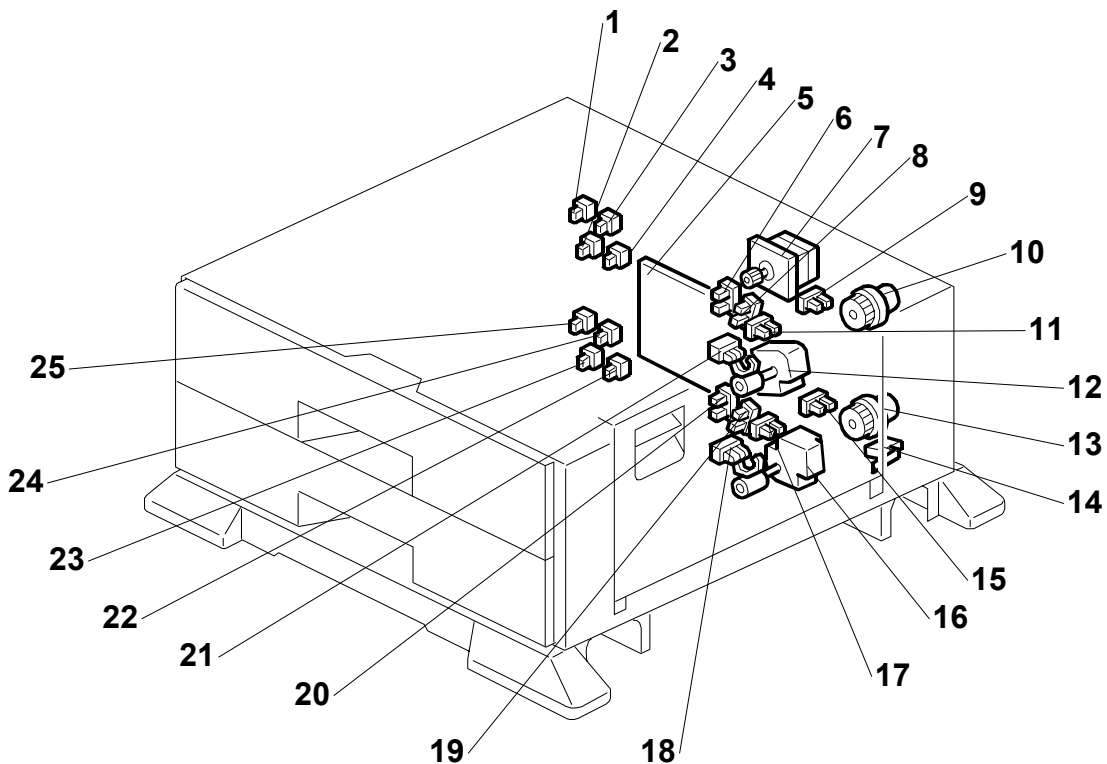
2.1.1 MECHANICAL COMPONENT LAYOUT



B598D001.WMF

- | | |
|----------------------------|----------------------------|
| 1. Upper Pick-up Roller | 6. Lower Paper Feed Roller |
| 2. Upper Paper Feed Roller | 7. Lower Separation Roller |
| 3. Upper Relay Roller | 8. Lower Pick-up Roller |
| 4. Upper Separation Roller | 9. Lower Tray |
| 5. Lower Relay Roller | 10. Upper Tray |

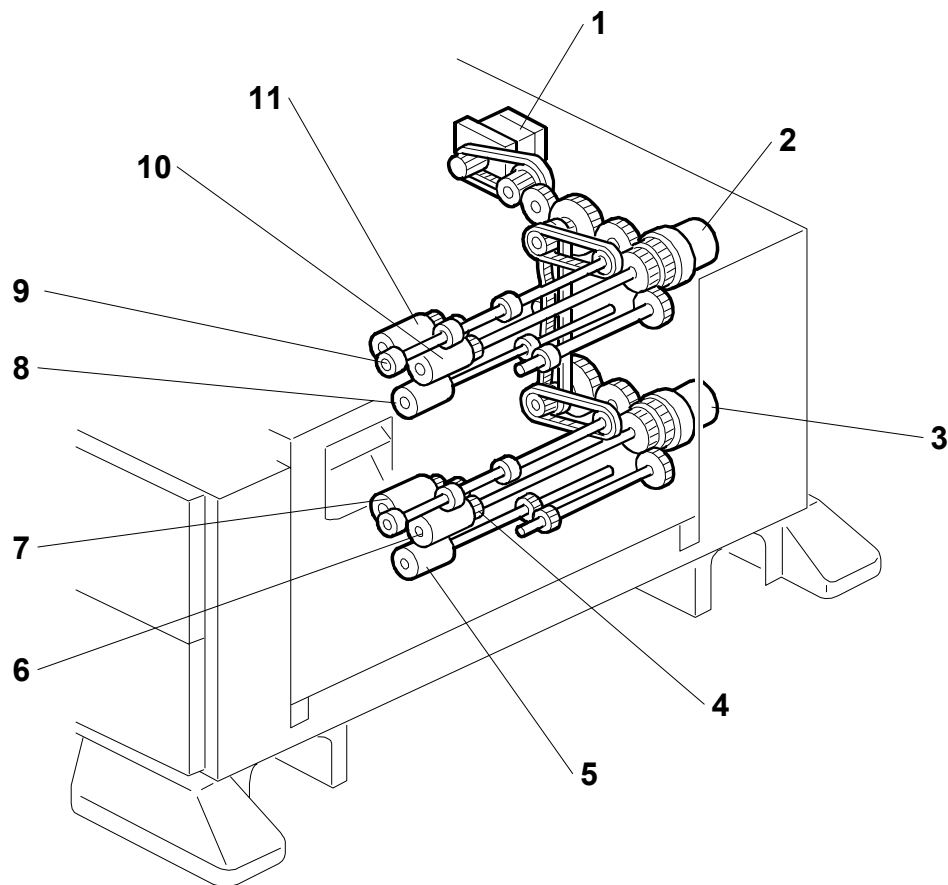
2.1.2 ELECTRICAL COMPONENT LAYOUT



B598D101.WMF

- | | |
|--------------------------------|---------------------------------|
| 1. Paper Size Switch 1 | 14. Vertical Guide Switch |
| 2. Paper Size Switch 2 | 15. Lower Lift Sensor |
| 3. Paper Size Switch 3 | 16. Lower Tray Lift Motor |
| 4. Paper Size Switch 4 | 17. Lower Paper End Sensor |
| 5. Main Board | 18. Lower Relay Sensor |
| 6. Upper Paper Height 1 Sensor | 19. Lower Paper Height 2 Sensor |
| 7. Paper Feed Motor | 20. Lower Paper Height 1 Sensor |
| 8. Upper Paper Height 2 Sensor | 21. Upper Relay Sensor |
| 9. Upper Lift Sensor | 22. Paper Size Switch 4 |
| 10. Upper Paper Feed Clutch | 23. Paper Size Switch 2 |
| 11. Upper Paper End Sensor | 24. Paper Size Switch 3 |
| 12. Upper Tray Lift Motor | 25. Paper Size Switch 1 |
| 13. Lower Paper Feed Clutch | |

2.1.3 DRIVE LAYOUT



B598D102.WMF

1. Tray Motor
2. Upper Paper Feed Clutch
3. Lower Paper Feed Clutch
4. Lower Relay Roller
5. Lower Separation Roller
6. Lower Paper Feed Roller
7. Lower Pick-up Roller
8. Upper Separation Roller
9. Upper Relay Roller
10. Upper Paper Feed Roller
11. Upper Pick-up Roller